

---

## SUNSEEKER PREDATOR 74

STYLE: PERFORMANCE MOTORYACHT

ACCOMMODATION: UP TO 8 GUESTS AND 2 CREW

PERFORMANCE: UP TO 45 KNOTS

THE NEW PREDATOR 74 PROVIDES TOTAL FLEXIBILITY TO MEET THE REQUIREMENTS OF EITHER OWNER-DRIVER OR CREWED OPERATION. WITH A CHOICE OF EITHER STANDARD HARDTOP OR OPTIONAL SPORTS FLYBRIDGE, AND OF LAYOUT CONFIGURATIONS THIS VERSATILE MODEL IS A FURTHER EVOLUTION OF THE PREDATOR RANGE.

---

## PREDATOR 74 HARD TOP



Choice is the order of the day with the Predator 74, reflecting Sunseeker's reputation for their semi-custom approach allowing for a number of optional changes to the design. This new model incorporates a number of design features that enables an owner to model the boat around their own individual needs. The latest design technologies and building techniques have been employed throughout along with a very select choice of materials, furnishings and finishes. Depending on personal requirements, a number of major options

are available. The large aft garage comes as standard, providing space for a tender or jet-ski or even a bespoke purpose built dive facility. However you can choose to include a twin crew cabin at the stern, without losing the garage space. Plus, you have the option of the sports flybridge with dual helm and controls which provides the perfect platform to experience the outstanding performance and handling capabilities of the Predator 74.

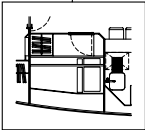
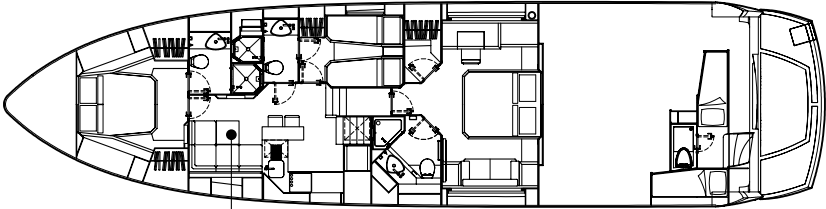
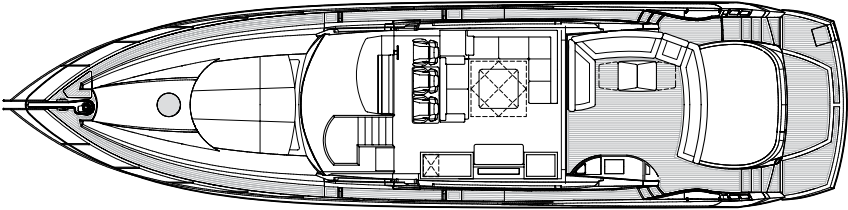
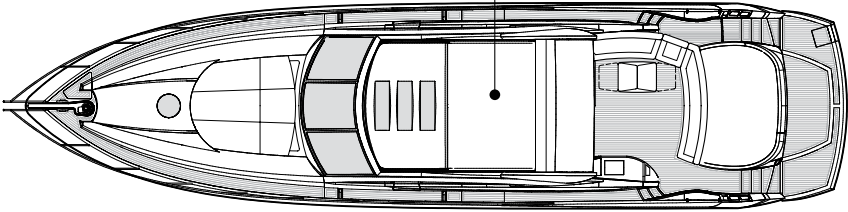
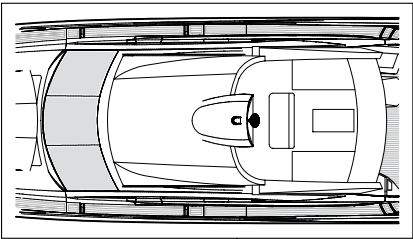
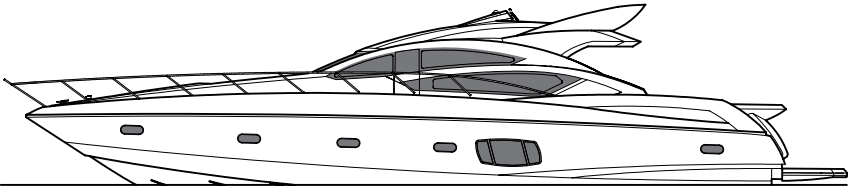
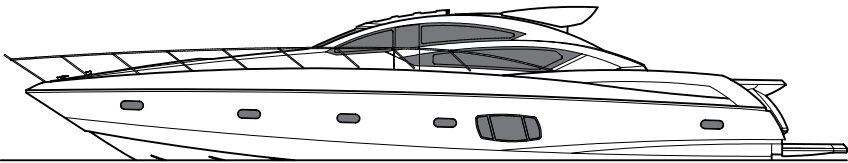
## PREDATOR 74 SPORTS FLYBRIDGE



On the main deck, space in both the aft cockpit and saloon is plentiful, ideal for entertaining friends, family or guests. Dining areas and comfortable lounge seating create a tranquil environment to relax and enjoy the state-of-the-art digital sound and TV system. Stepping down to the accommodation deck the choice of layout and cabin type continues. The standard layout provides a full-beam master stateroom with large en suite, a twin cabin to starboard and VIP stateroom forward both with en suite facilities. There is a large fully

equipped galley to port incorporating a range of high quality appliances and a separate seating/dining area which has the option of becoming a separate Pullman cabin with twin berths.

Again, there is a choice of power options up to 3144 PS driving twin FP props in tunnels to deliver speeds up to 38 knots and a cruising range of 380 nautical miles – making even the choice of destination a broad one.



PRINCIPAL CHARACTERISTICS - PROVISIONAL

Length overall – (incl. pulpit)	22.26 m	73' 0"	
Length hull – (incl. platform)	21.40 m	70' 3"	
Length waterline – (@ half load)	16.50 m	54'2"	
Beam – (maximum incl. Rubbing strake)	5.40 m	17' 9"	
Draft – (maximum @ full load)	1.65 m	5' 5"	
Displacement – (@ half load)	32500 kg	106627 lb	
Fuel capacity	3900 litres	858 GB gal	1030 US gal
Fresh water capacity	720 litres	158 GB gal	190 US gal
Propulsion	Twin FP props in semi-tunnels		
Engine options	Up to 3144hp (total)		
Fuel options	Diesel		
Generators	Standard		
	20 kW @ 50Hz(Euro)		
	23kW ~ 60Hz(USA)		
Maximum speed	up to 45 knots*		
Cruising speed	25 knots*		
Range	up to 380 miles		

PRINCIPAL FEATURES - PROVISIONAL

Hydraulic lifting platform  
Garage under Sunlounger  
Electric winch with deck and cockpit controls  
2 x stern electric capstan winches  
Hot and cold swim shower  
Wetbar with griddle, icemaker, ice chest, hot and cold water  
Radar plotter and autopilot  
Power-assisted steering  
Electronic speedlog, depth sounder and VHF radio  
Trim tabs  
Flatscreen television and DVD/CD surround system in deck  
Saloon  
Radio/CD player for cockpit  
Ceramic hob, microwave/grill, refrigerator and freezer  
Hot and cold water system  
Automatic fire extinguisher  
Automatic bilge pump  
Slow speed generator with silent exhaust  
AC shorepower/battery charger  
Electric toilets with holding tank  
Fresh water marina connection  
Teak bathing platform and steps  
Teak cockpit  
Opening hardtop  
Air-conditioning  
Bow thruster  
Antifouling

All items included in standard specification.

US specification includes:  
US Coast Guard build regulations  
US spcification appliances

For full specification visit [www.sunseeker.com](http://www.sunseeker.com)

SPECIFICATION - PROVISIONAL

**1 Construction**  
Hand-laid GRP  
Gel coat including stripes  
Vinylester skin coat with powderbound mat  
Stitched multi-axial reinforced single skin bottom  
Balsa cored hull topsides  
PVC foam cored deck and superstructure  
Hull stiffened with longitudinal stringers supported by transverse bulkheads and floors

**2 Deck**  
Fittings all in stainless steel  
8 x stainless steel deck cleats  
Pulpit and cockpit rails  
Stainless steel fendering with rubber insert  
Curved safety glass windscreen  
Stainless steel bow roller with anchor stop  
Stainless steel bow plate  
Delta anchor and 60m chain (galvanised)  
Electric winch and capstan with deck and cockpit controls  
Chain locker fender stowage  
Fender tie bar under anchor locker lid  
3 x pantograph windscreen wipers 24v and washers  
Fuel fillers port and starboard  
Fresh-water filler  
IMCO navigation lights  
Ensign staff and socket  
Tender garage

**3 Bathing platform**  
Hydraulic lifting platform  
Teak-laid bathing platform and steps  
Hot and cold swimming shower  
Fresh water marina connection  
Dockside AC shore power connection  
Stainless steel swimming ladder

**4 Cockpit**  
Self draining  
Teak cockpit decking  
Stern safety gates  
Radio/CD remote control  
Cockpit speakers  
Wetbar sink with hot and cold water, ice chest, ice maker and griddle  
Deeply upholstered seating around cockpit table  
Lockers beneath seating  
Rear bench seat  
Overhead cockpit lights 24v  
Low-level courtesy lights 24v  
Engine room access hatch  
Boat hook



**5 Helm Console**

Twin co-pilot seat and single electric helm seat  
Chart area  
Console with burr type walnut fascia  
Hydraulic power steering  
Chrome with black leather steering wheel  
Full analogue engine instrumentation  
Radar plotter with open scanner  
Single lever electronic engine controls  
Autopilot  
Electronic speedlog  
Depth sounder  
Rudder indicator  
Water tank gauge  
Fuel tank gauge  
VHF radio with DSC  
Trim tab controls  
Compass  
Horn  
Windscreen wipers and washers  
Glass holders  
Hand-held fire extinguisher  
Radio/CD  
Main control panel (AC/DC)  
Generator controls  
Opening side door

**6 Deck Saloon**

Large dining/lounging area with dining table  
Scatter cushions  
Lockers beneath seating  
Removable Ottoman seat  
Drinks locker  
Air conditioning  
Flatscreen television with DVD/CD surround system  
Power operated opening sunroof  
Halogen overhead lighting 24v  
Low-level lighting 24v  
Two Double AC sockets  
Hand-held fire extinguisher  
Teak Flooring  
Stainless steel triple opening doors to cockpit

**7 Galley**

Sink and drainer  
Hot and cold water  
Electric ceramic hob  
Microwave Oven  
Electric refrigerator  
Electric freezer  
Dishwasher  
Rubbish bin  
Bar with stools  
Cupboard and drawer stowage  
8 place crockery set  
8 place cutlery set  
Double AC socket  
Hand-held fire extinguisher  
Opening porthole with mosquito screens and blind  
First aid kit

**8 Breakfast Saloon**

Breakfast area with coffee table  
Lockers beneath seats  
Flatscreen television and DVD player  
Outboard cupboards  
Opening porthole with mosquito screen and curtains  
Halogen overhead lighting 24v  
Air conditioning  
Double AC socket  
Vacuum cleaner  
Hand-held fire extinguisher  
Fitted carpet

**9 Forward Stateroom**

Double berth  
Storage beneath  
Drawer in base end  
2 x reading lights  
Overhead bedside cupboards  
Hanging wardrobe with mirrored door  
Shelved cupboard  
Halogen overhead lights 24v  
2 x Opening portholes with mosquito screens and curtains  
Deck hatch with mosquito screen  
Air conditioning  
Double AC socket  
Fitted carpet  
Flatscreen television and DVD player  
Door to shower room

**10 Forward En-Suite Shower Room**

Wash basin  
Taps and accessories  
Hot and cold water  
Separate shower compartment  
Electric toilet  
Extractor fan  
Mirrored vanity unit  
Shelved cupboard  
Toothbrush glass holder  
Towel ring and towels  
Overhead lights  
Opening porthole with mosquito screen and blind  
Razor socket 240/110v  
Soap dispenser

**11 Starboard Guest Cabin**

2 x single berths  
Under berth storage  
2 x reading lights  
Full hanging wardrobe  
Halogen overhead lighting 24v  
Opening porthole with mosquito screen and curtain  
Air conditioning  
Flatscreen television and DVD player  
Double AC socket  
Fitted carpet

---

**12 Stbd en-suite shower room / Day head**

Wash basin  
Taps and accessories  
Hot and cold water  
Separate shower compartment  
Electric toilet  
Extractor fan  
Mirrored vanity unit  
Shelved cupboard  
Toothbrush glass holder  
Towel ring and towels  
Overhead light  
Opening porthole with mosquito screen and blind  
Razor socket 240/110v  
Soap dispenser

**13 Aft master stateroom**

Double berth  
Drawer stowage  
2 x bed-side reading lights  
Bedside drawers  
Walk in Hanging wardrobe  
Halogen overhead lights 24v  
Large side windows portholes with openings  
Air conditioning  
Two Double AC sockets  
Fitted carpet  
Flatscreen television and DVD player  
Settee  
Vanity unit with chair  
Door to shower room

**14 Master en-suite shower room**

Wash basin  
Taps and accessories  
Hot and cold water  
Separate shower compartment  
Electric toilet  
Extractor fan  
Mirrored vanity unit  
Shelved cupboard  
Toothbrush glass holder  
Towel ring and towels  
Overhead light  
Opening porthole with mosquito screen and blind  
Razor socket 240/110v  
Soap dispenser

**15 Engine compartment and ancillaries**

Twin engines  
Soundproofing throughout engine room  
Fuel tanks with electric sending unit  
Separate fuel filters/water separators  
Automatic fire extinguishers  
Engine room and forward bilge flood alarms  
2 x automatic bilge pumps  
2 x automatic flood pumps  
4 x extractor fans 24v  
Manual bilge pump

**16 Electrical System**

Slow speed generator with underwater silent exhaust and sound box  
AC dockside connection  
Galvanic isolator  
24v and 12v DC electrical system with full circuit breaker protection  
6 x engine batteries 24v circuit  
4 x domestic batteries 24v circuit  
2 x generator batteries 12v circuit  
Alternator split charging system  
Remote battery switches controlled from locker in cockpit  
Battery charger for 24v circuits  
Battery charger for 12v circuits  
Water heater  
AC sockets throughout the boat  
24v hand light and cable

**17 Underwater Gear**

5-blade NAB bronze propellers  
Bronze P-brackets  
2 x 2 1/4" stainless steel Temet 25 shafts  
Dripless shaft logs with spare seals  
High-performance bronze rudders and struts  
Seawater strainers x 2 main engines /  
1 x generator  
Seacocks on all underwater fittings  
Full cathodic bonding system to zinc anodes  
Heavy duty S/S hydraulic trim tabs 24v

**18 Systems**

Hydraulic power steering engine driven pump  
Vacuum toilet system  
Aluminium freshwater tank with electric sending unit  
24v fresh- water pressure system  
Hot water tank

**19 Miscellaneous**

Tool kit  
Boat hook  
4 x Mooring ropes  
6 x Fenders  
Spare bulbs and fuses  
2 sets towels

**20 Optional extras**

Retractable Bimini top  
Twin berth crew cabin aft with separate toilet  
Pullman cabin to replace the lower breakfast saloon  
Teak side decks  
Sport Fly top (in lieu of the opening hard top)

**US Specification includes:-**

**US Coast Guard build Regulations**

**US Specification appliances**

---

**Naval architects**

Don Shead/Sunseeker Design

**Exterior styling**

Sunseeker Design

**Interior design**

Sunseeker Design

**Builder**

Sunseeker International

\*Every attempt has been made to give accurate information, but performance and range figures are estimates given as a guide only. Dirt or growth on the hull, tuning of the engines, size, make of engines fitted, damage to propellers, the temperature of the air and water, the weight of fuel, water, stores, number of people, propeller pitch, quality of fuel and other matters, can all affect the boat's performance and range. For these and other reasons we can give no performance, range or other guarantees, and neither such guarantees nor anything contained herein constitutes an offer of contract or any representation or agreement, or may otherwise be relied upon. The photographs and artist impressions in this brochure are of existing models in the Sunseeker range. There may be items shown in these photographs and artist impressions that are not included in the standard inventory of the models shown. Specifications contained on the web site are samples only, should not be relied upon, and may refer to models only intended for sale in a particular territory and not generally. No guarantee is given that any model will be available in any territory; however by contacting us we can advise you of models that are likely to be available in each territory. Actual specifications will be provided when a sales order or enquiry is placed with us or our approved Sunseeker dealer. Specifications for models sold in different markets may vary and specifications and models may be changed or withdrawn at any time without prior notice. The individual specification for each vessel will be agreed as part of the sale contract between the purchaser and the Sunseeker dealer. Dealers and distributors are independently owned and operated entities, and therefore Sunseeker dealers and distributors are not owned by Sunseeker International Limited or any subsidiaries or other related entity of this company nor are they their agents. Therefore they have absolutely no authority to commit Sunseeker International Limited, or any subsidiary or other related entities of Sunseeker International Limited to any pledge, contract or agreement in any form or by any means unless first accepted in writing by Sunseeker International Limited. In some examples herein Sunseeker have referred to measurements, specifications or other details applicable to a particular territory and no guarantee is given that these are applicable to your territory. For ease of reference we have, in some cases, referred to "we" or "Sunseeker" and these terms should be taken to mean Sunseeker International Limited.

Designed, written and produced by Marketing Matters Limited. Printed in England. September 2008. ©Sunseeker International.



Sunseeker International Limited has CE Approval which is compulsory for all boats with a LOA of 24m and below when sold in the EU.