

PREDATOR 72

STYLE: PERFORMANCE MOTORYACHT

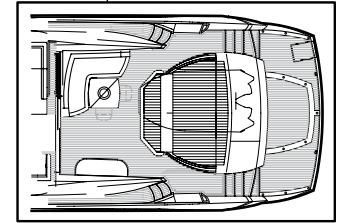
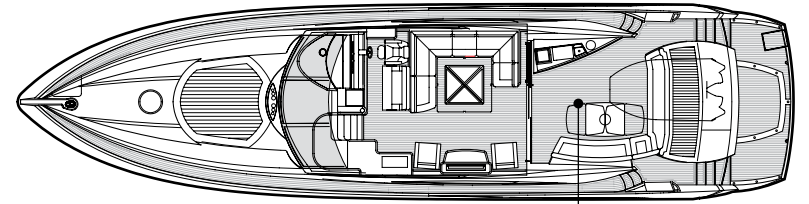
ACCOMMODATION: UP TO 6 GUESTS AND 2 CREW MEMBERS

PERFORMANCE: UP TO 38 KNOTS

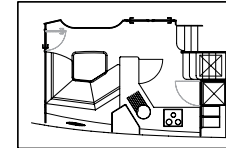
OCCUPYING MIDDLE GROUND BETWEEN CREWED OR OWNER-DRIVER OPERATION, THE PREDATOR 72 PROVIDES FOR EITHER CHOICE WITH THE OPTION OF GARAGE OR CREW QUARTERS AFT. THE PRIORITY MIGHT BE OF COURSE TO SHELTER THE TENDER AND LEAVE THE BATHING PLATFORM FREE. THE MAIN DECK SHARES THE FLAIR FAMILIAR ON ALL PREDATORS, WIDE OPENING SALOON REAR DOORS CO-JOINING THE OPEN AFT COCKPIT AND INNER SALOON AND FURTHER BRINGING THE OUTDOORS INDOORS AT WILL WITH A HARD TOP THAT OPENS AT THE FLICK OF A SWITCH, LETTING LIGHT AND AIR POUR IN. AGAIN, BELOW THERE IS A RANGE OF OPTIONS IN CABIN PLAN TO MATCH INDIVIDUAL PREFERENCES.



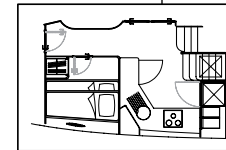
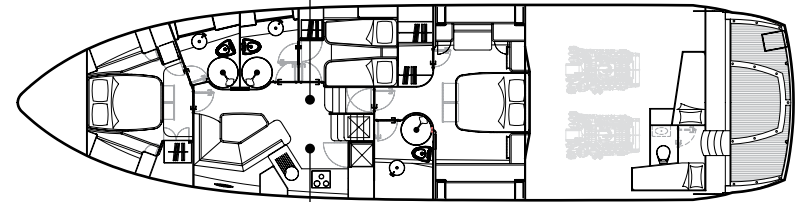
Main deck



Optional extended galley bar



Optional port Pullman cabin



PRINCIPAL CHARACTERISTICS

Length overall – (incl. pulpit)	22.26m	73'0"
Length hull – (incl. platform)	21.40m	70'3"
Length waterline – (@ half load)	16.50m	54'2"
Beam – (maximum incl. rubbing strake)	5.40m	17'9"
Draft – (maximum @ full load)	1.65m	5'5"
Displacement – (@ half load)	32500kg	106627lb
Fuel capacity	3900 litres	858 GB gal. 1030 US gal.
Fresh-water capacity	720 litres	158 GB gal. 190 US gal.
Propulsion	Twin FP props in tunnels	
Engine options	up to 3144 PS (total)	

Fuel options	Diesel
Generators	Standard 20kW @ 50Hz (Euro) 23kW @ 60Hz (US)
Maximum speed	up to 38 knots*
Cruising speed	up to 25 knots*
Range	up to 380 nautical miles*

All principal characteristics and specifications are provisional.



PREDATOR 72

PRINCIPAL FEATURES

Hydraulic lifting platform
Garage under sunlounger
Electric winch with deck and cockpit controls
2 x stern electric capstan winches
Hot and cold swim shower
Wetbar with griddle, ice maker, ice chest, hot and cold water
Radar and autopilot
Power-assisted steering
Electronic speedlog, depth sounder and VHF radio
Trim tabs
Flatscreen television and DVD/CD surround system in deck salon
Radio/CD player
Ceramic hob, microwave/grill, refrigerator and freezer
Hot and cold water system
Automatic fire extinguisher
Automatic bilge pumps
Slow speed generator with underwater silent exhaust
AC shorepower/battery charger
Vacuum toilets with holding tank
Fresh-water marina connection
Teak bathing platform and steps
Teak cockpit
Opening hardtop
Air-conditioning
Bow thruster
Antifouling

All items included in standard specification.

US specification includes:
US Coast Guard build regulations
US specification appliances

STANDARD SPECIFICATIONS

1 Construction

Hand-laid GRP
Gel coat including stripes
Vinylester skin coat with powderbound mat
Stitched multi-axial reinforced single skin bottom
Balsa cored hull topsides
PVC foam cored deck and superstructure
Hull stiffened with longitudinal stringers supported by transverse bulkheads and floors

2 Deck

Fittings all in stainless steel
8 x stainless steel deck cleats
Pulpit and cockpit rails
Stainless steel fendering with rubber insert
Curved safety glass windscreen
Stainless steel bow roller with anchor stop
Stainless steel bow plate
Delta anchor and 60m chain (galvanised)
Electric winch and capstan with deck and cockpit controls
Chain locker fender stowage
Fender tie bar under anchor locker lid
2 x Pantograph windscreen wipers 24v and washers
Fuel fillers port and starboard
Fresh-water filler
IMCO navigation lights
Ensign staff and socket
Tender garage

3 Bathing platform

Hydraulic lifting platform
Teak-laid bathing platform and steps
Hot and cold swimming shower
Fresh-water marina connection
Dockside AC shore power connection
Stainless steel swimming ladder

4 Cockpit

Self draining
Stern safety door
Radio/CD remote control
Cockpit speakers
Wetbar sink with hot and cold water, ice chest, ice maker, bottle locker and griddle
Deeply upholstered seating around cockpit table
Lockers beneath seating
Rear bench seat with convertible sunbather
Overhead cockpit lights 24v
Low-level courtesy lights 24v
Engine room access hatch
Boat hook

5 Helm console

Double stand/sit co-pilot seat and single helm seat
Chart area
Console with burr type walnut fascia
Hydraulic power steering
Wood rimmed steering wheel
Full analogue engine instrumentation
Radar open scanner
Single lever engine controls
Autopilot
Electronic speedlog
Depth sounder
Rudder indicator
Water tank gauge
Fuel tank gauge
VHF radio
Trim tab controls
Compass
Horn
Windscreen wipers and washers
Glass holders
Hand-held fire extinguisher
Radio/CD
Main control panel (AC/DC)
Generator controls
Opening sidewindow

6 Deck salon

Large dining/lounging area with dining table
Scatter cushions
Lockers beneath seating
2 x movable comfortable chairs
Drinks locker
Air-conditioning
Flatscreen television with DVD/CD surround system
Power operated opening sunroof
Halogen overhead lighting 24v
Low-level lighting 24v
Double AC sockets
Hand-held fire extinguisher
Teak decking
Stainless steel triple opening doors to cockpit

7 Galley

Sink and drainer
Electric ceramic hob
Electric refrigerator
Electric freezer
Microwave/grill
Rubbish bin
Cupboard and drawer stowage
8 place crockery set
8 place cutlery set
Double AC socket
Hand-held fire extinguisher
Opening porthole with mosquito screens and curtains
First aid kit

1. Upper saloon toward drive station
2. Aft garage
3. The Predator 72
4. Master stateroom
5. Master en suite
6. Aft sun deck
7. Aerial view of the Predator 72
8. Sliding sun roof above drive station



4



5



6

8 Breakfast saloon

Breakfast area with dining table
Lockers beneath seats
Flatscreen television
Overhead cupboards
Opening portholes with mosquito screen and curtains
Halogen overhead lighting 24v
Air-conditioning
Double AC socket
Vacuum cleaner
Hand-held fire extinguisher
Fitted carpet

9 Forward stateroom

Double berth
Storage beneath
Drawer in base end
2 x reading lights 24v
Outboard shelving
Overhead bedside cupboards
Hanging wardrobe with mirrored door
Shelved cupboard
Halogen overhead lights 24v
2 x opening portholes with mosquito screens and curtains
Deck hatch with mosquito screen
Air-conditioning
Double AC socket
Door to shower room
Fitted carpet
Flatscreen television
DVD player

10 Forward en suite shower room

Washbasin
Taps and accessories
Separate shower compartment
Vacuum toilet
Extractor fan
Mirrored vanity unit
Shelved cupboard
Toothbrush glass holder
Towel ring and towels
Overhead light
Opening porthole with mosquito screen and blind
Shaver socket 240/110v
Soap dish

11 Starboard guest cabin

2 x single berths
Under berth storage
2 x reading lights 24v
Full hanging wardrobe
Halogen overhead lights 24v
Opening porthole with mosquito screen and curtain
Air-conditioning
Double AC sockets
Fitted carpet

12 Starboard en suite shower room/day head

Washbasin
Taps and accessories
Separate shower compartment
Vacuum toilet
Extractor fan
Mirrored vanity unit
Shelved cupboard
Toothbrush glass holder
Towel ring and towels
Overhead light
Opening porthole with mosquito screen and blind
Shaver socket 240/110v
Soap dish

13 Aft master stateroom

Double berth
Draw stowage
2 x reading lights 24v
Outboard shelving
Bedside drawers
Walk-in hanging wardrobe
Halogen overhead lights 24v
2 x large opening and 4 x fixed portholes with mosquito screen and blinds
Air-conditioning
Double AC socket
Fitted carpet
Flatscreen television
DVD player
Sofa
Vanity unit with stool

14 Master en suite shower room

Washbasin
Taps and accessories
Separate shower compartment
Vacuum toilet
Extractor fan
Mirrored vanity unit
Shelved cupboard
Toothbrush glass holder
Towel ring and towels
Overhead light
Opening porthole with mosquito screen and blind
Shaver socket 240/110v
Soap dish

15 Engine compartment and ancillaries

Twin engines
Soundproofing throughout engine room
Fuel tanks with electric sending unit
Separate fuel filters/water separators
Automatic fire extinguishers
Engine room and forward bilge flood alarms
2 x automatic bilge pumps
2 x automatic flood pumps
4 x extractor fans 24v
Manual bilge pump

16 Electrical system

Slow speed generator with underwater silent exhaust and sound box
AC dockside connection
Galvanic isolator
24v and 12v DC electrical system with full circuit breaker protection
6 x engine batteries 24v circuit
4 x domestic batteries 24v circuit
2 x generator batteries 12v circuit
Alternator split charging system
Remote battery switches controlled from locker in cockpit
Battery charger for 24v circuits
Battery charger for 12v circuits
Water heater
AC sockets throughout the boat
24v hand light and cable

17 Underwater gear

5-blade NAB bronze propellers
Bronze P-brackets
2 x 2 1/4" stainless steel Temet 25 shafts
Dripless shaft logs with spare seals
High-performance bronze rudders and struts
Seawater strainers – 2 x main engines/1 x generators
Seacocks on all underwater fittings
Full cathodic bonding system to zinc anodes
Heavy duty S/S hydraulic trim tabs 24v

18 Systems

Hydraulic power steering engine driven pump
Vacuum toilet system
Aluminium fresh-water tank with electric sending unit
24v fresh-water pressure system
Hot water tank

19 Miscellaneous

Toolkit
Boat hook
Mooring ropes x 4
Fenders x 6
Spare bulbs and fuses
2 sets towels

20 Optional extras

Retractable bimini top
Twin berth crew cabin aft with separate toilet
Pullman cabin to replace the lower breakfast saloon
Teak side decks

US specification includes:

US Coast Guard build regulations
US specification appliances



*Every attempt has been made to give accurate information, but performance and range figures are estimates given as a guide only. Dirt or growth on the hull, tuning of the engines, size, make of engines fitted, damage to propellers, the temperature of the air and water, the weight of fuel, water, stores, number of people, propeller pitch, quality of fuel and other matters, can all affect a boat's performance and range. For these and other reasons we can give no performance, range or other guarantees, and neither such guarantees nor anything contained herein constitutes an offer of contract or any representation or agreement, or may otherwise be relied upon. The photographs and artist's impressions in this brochure are of existing models in the Sunseeker range. There may be items shown in these photographs and artist's impressions that are not included in the standard inventory of the models shown. Specifications contained on the web site are samples only and should not be relied upon and may refer to models only intended for sale in a particular territory and not generally. No guarantee is given that any model will be available in any territory; however by contacting us we can advise you of models that are likely to be available in each territory. Actual specifications will be provided when a sales order or enquiry is placed with us or our approved Sunseeker dealer.

Specifications for models sold in different markets may vary and specifications and models may be changed or withdrawn at any time without prior notice. The individual specification for each vessel will be agreed as part of the sale contract between the purchaser and the Sunseeker dealer. Dealers and distributors are independently owned and operated entities, and therefore Sunseeker dealers and distributors are not owned by Sunseeker International Limited or any subsidiaries or other related entity of this company nor are they their agents. Therefore they have absolutely no authority to commit Sunseeker International Limited, or any subsidiary or other related entities of Sunseeker International Limited to any pledge, contract or agreement in any form or by any means unless first accepted in writing by Sunseeker International Limited. In some examples herein Sunseeker have referred to measurements, specifications or other details applicable to a particular territory and no guarantee is given that these are applicable to your territory. For ease of reference we have, in some cases, referred to "we" or "Sunseeker" and these terms should be taken to mean Sunseeker International Limited.



Awards

Sunseeker's success over the years is clearly underlined by the following list of national and international awards and achievements.

2008	UK Motor Boat of the Year Awards 2008	Manhattan 60	2001	Best Power Interior Award	105 Yacht, The Superyacht Society
2007	European Powerboat of the Year	Superhawk 43	2001	President's Award	Southern California Marine Association
2007	Asia Pacific Boating Awards	90 Yacht, Best of the Best	2000	Queen's Award for Enterprise	Continuous innovation and development
2007	Modern Boating Magazine 2007	Portofino 47, Imported Powerboat of the Year	2000	The Times Exporter of the Year	Times Export Awards
2007	Australian Marine Industries Federation Awards	Predator 62, Imported Powerboat of the Year	2000	Robb Report Award	Best of the Best, Boating and Sailing
2007	Nominated by The Superyacht Society	37 Metre Yacht 'The Snapper'	1999	Robb Report Award	Best of the Best, Boating and Sailing
2007	Queen's Award for Enterprise	International Trade	1999	Motorboat of the Year	Predator 75, BT British Nautical Awards
2006	Nominated for three Superyacht Awards	Predator 108 'SHIVER'	1998	Superyacht Design Award	Manhattan 74, Superyacht Design Awards
2005	Australian Marine Industries Federation Awards	75 Yacht, Non-Trailable Boat Award	1998	Editor in Chief Awards	Yachts Magazine
2005	Australian Marine Industries Federation Awards	Portofino 46, Commendation	1997	Lifetime Achievement Award	Robert Braithwaite MBE, RYA Awards
2005	Modern Boating, Power Boat of the Year Awards	Predator 68, Imported Powerboat of the Year	1996	Motorcruiser of the Year Award	RYA British Nautical Awards
2005	Boats.com Marine Industry Web Awards	Manufacturers Category for www.sunseeker.com	1996	Exporter of the Year Award	DCCI Export Awards
2004	Sydney Boat Show 2004	Best Overall Display	1995	Boat Builder of the Year Award	RYA/BMIF British Nautical Awards
2004	Sydney Boat Show 2004	Best Marina Display	1994	Queen's Award for Export Achievement	Queen's Awards for Industry
2003	Australian Marine Awards	Manhattan 56, Award for Excellence	1992	Best in the World Award	Renegade 60, Boating Magazine
2003	Australian Marine Awards	Predator 68, Best Imported Non-Trailable Yacht	1990	Exporter of the Year	SW International Business Awards
2002	Entrepreneur of the Year Award	Robert Braithwaite MBE	1989	Queen's Award for Export Achievement	Queen's Awards for Industry
2001	Best Power Design Award	105 Yacht, The Superyacht Society	1987	Queen's Award for Export Achievement	Queen's Awards for Industry

Naval architects

Don Shead/Sunseeker Design

Exterior styling

Sunseeker Design

Interior design

Sunseeker Design

Builder

Sunseeker International

*Every attempt has been made to give accurate information, but performance and range figures are estimates given as a guide only. Dirt or growth on the hull, tuning of the engines, size, make of engines fitted, damage to propellers, the temperature of the air and water, the weight of fuel, water, stores, number of people, propeller pitch, quality of fuel and other matters, can all affect a boat's performance and range. For these and other reasons we can give no performance, range or other guarantees, and neither such guarantees nor anything contained herein constitutes an offer of contract or any representation or agreement, or may otherwise be relied upon. The photographs and artist's impressions in this brochure are of existing models in the Sunseeker range. There may be items shown in these photographs and artist's impressions that are not included in the standard inventory of the models shown. Specifications contained on the web site are samples only and should not be relied upon and may refer to models only intended for sale in a particular territory and not generally. No guarantee is given that any model will be available in any territory; however by contacting us we can advise you of models that are likely to be available in each territory. Actual specifications will be provided when a sales order or enquiry is placed with us or our approved Sunseeker dealer. Specifications for models sold in different markets may vary and specifications and models may be changed or withdrawn at any time without prior notice. The individual specification for each vessel will be agreed as part of the sale contract between the purchaser and the Sunseeker dealer. Dealers and distributors are independently owned and operated entities, and therefore Sunseeker dealers and distributors are not owned by Sunseeker International Limited or any subsidiaries or other related entity of this company nor are they their agents. Therefore they have absolutely no authority to commit Sunseeker International Limited, or any subsidiary or other related entities of Sunseeker International Limited to any pledge, contract or agreement in any form or by any means unless first accepted in writing by Sunseeker International Limited. In some examples herein Sunseeker have referred to measurements, specifications or other details applicable to a particular territory and no guarantee is given that these are applicable to your territory. For ease of reference we have, in some cases, referred to "we" or "Sunseeker" and these terms should be taken to mean Sunseeker International Limited.

Designed, written and produced by Marketing Matters Limited. Printed in England. August 2008. ©Sunseeker International.



Sunseeker International Limited has CE Approval which is compulsory for all boats with a LOA of 24m and below when sold in the EU.