

# 86



## SUNSEEKER 86 YACHT

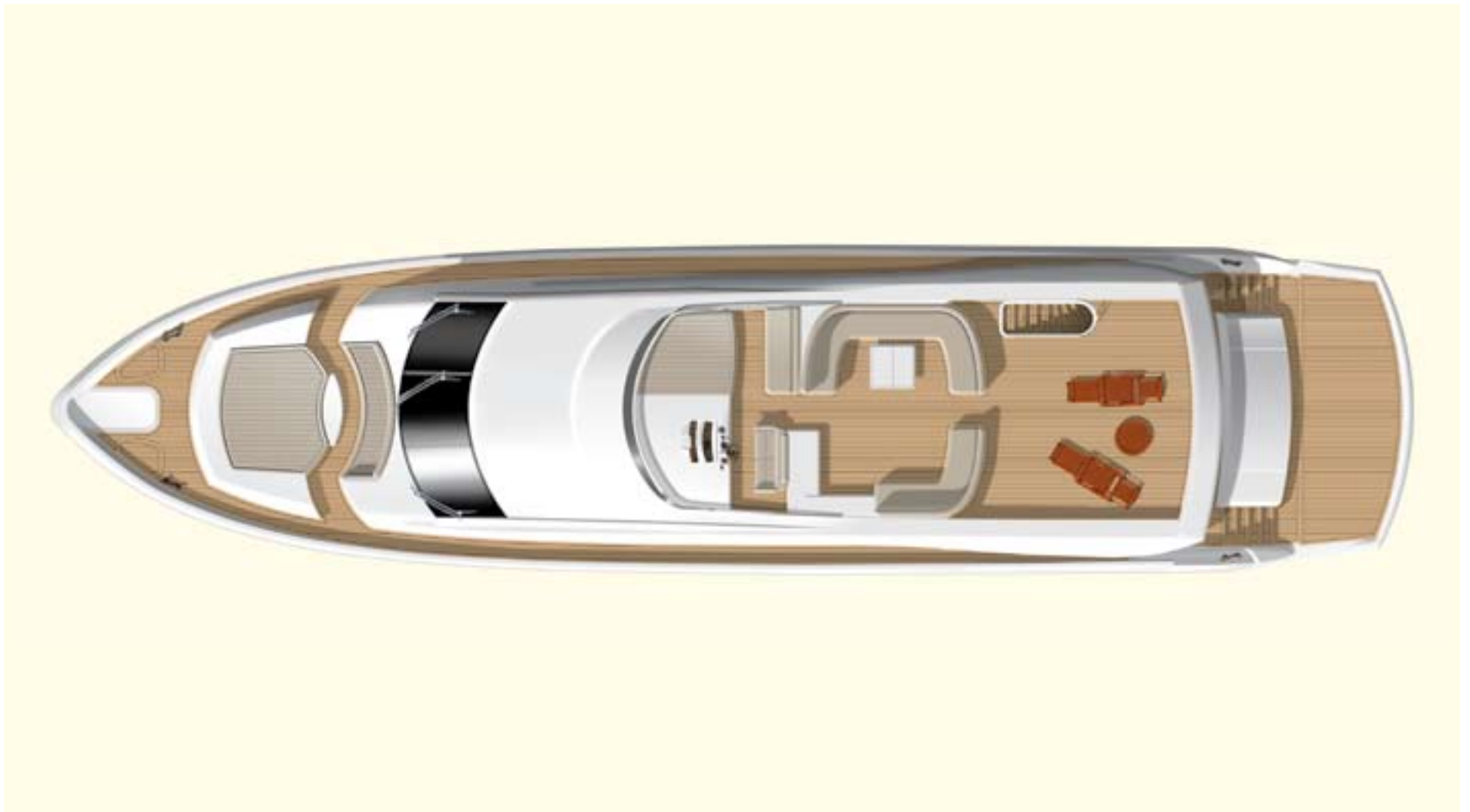
SPECIFICATION



---

With its progressive exterior design, immense presence on the water and flawless interiors, the 86 Yacht epitomises Sunseeker's class and charisma.

This Yacht's impressive performance is complemented by the scope for customisation throughout. You have the option to add luxurious extras such as a hot tub on the flybridge, and a choice of layouts depending whether the boat is for charter or personal use.



PRINCIPAL CHARACTERISTICS – Provisional

<b>Length overall – (incl. pulpit and platform)</b>	27.0m	88'7"	
<b>Length waterline – (@ half load)</b>	20.29m	66'7"	
<b>Beam – (maximum)</b>	6.41m	21'0"	
<b>Height above waterline – (excl. mast)</b>	7.28m	23'11"	
<b>Draft – (incl. props)</b>	1.70m	5'7"	
<b>Displacement – (@ half load)</b>	64100kg	141316 lb	
<b>Fuel capacity</b>	7500 litres	1650 GB gal.	1982 US gal.
<b>Fresh water capacity</b>	1500 litres	330 GB gal.	396 US gal.
<b>Propulsion</b>	2 x submerged props in semi-tunnels		
<b>Engine options</b>	up to 3650 PS (total)		
<b>Fuel options</b>	Diesel		
<b>Maximum speed</b>	up to 32 knots*		
<b>Cruising speed</b>	up to 23 knots*		
<b>Range</b>	up to 350 nautical miles*		

All principal characteristics and specifications are provisional

PRINCIPAL FEATURES – Provisional

- Air conditioning
  - Hydraulic lifting platform
  - Electric winch and capstan at bow with foredeck controls
  - Manual side opening helm and galley access doors
  - Hot and cold swimming shower at stern
  - Power-assisted steering
  - Flybridge wetbar with sink, ice maker, cool chest and griddle
  - Flatscreen televisions and DVD/CD player in all guest cabins and crew mess
  - Surround-sound system DVD/CD/radio in saloon and master stateroom
  - I-Pod docking station in main saloon
  - Aft cockpit bar unit
  - Electric refrigerator/freezer with ice maker
  - Ceramic hob, microwave/oven and dishwasher
  - Electronic depth and speed displays
  - Radar/Chart plotter with GPS
  - Autopilot
  - VHF radio (dual station)
  - Hot and cold water system
  - Fresh water pump
  - Toilet system with holding tank
  - Automatic fire extinguishing system for engine room
- Automatic bilge pumps
  - Slow speed generators with silent exhausts
  - Fire detection system
  - AC shorepower/battery charger
  - Bow thruster
  - Stern thruster
  - Trim tabs
  - Remote controlled spotlight at bow
  - Deckwash with outlets forward, aft and flybridge
  - Fresh water marina connection
  - Teak bathing platform and steps
  - Teak side decks
  - Teak cockpit floor
  - Screen demisters
  - Stern winches
  - Antifouling
- All items included in standard specification.
- US specification includes:**  
 Upgraded generators  
 US Coast Guard build regulations  
 US specification appliances



## STANDARD SPECIFICATIONS – Provisional

### 1 Construction

Hand-laid GRP  
Gel coat including stripes  
Vinylester skin coat with powderbound mat  
Stitched multi-axial reinforced single skin bottom  
Balsa cored hull topsides  
PVC foam cored deck and superstructure  
Hull stiffened with longitudinal stringers supported by transverse bulkheads and floors

### 2 Deck

Fittings all in 316 stainless steel and chromed bronze  
Pair stainless steel bow cleats and fairleads  
Stainless steel spring cleats with chafing bars  
Pair stern cleats and fairleads  
Stainless steel pulpit and cockpit rails  
Stainless steel fendering with rubber insert  
Stainless steel bow roller with anchor stop and devil's claw  
Single electric windlass (24v, starboard side), foredeck control only  
Single electric capstan (24v, port side), foredeck control only  
Anchor 60kg claw-type and 100m chain (galvanised)  
Stainless steel bow plate  
Deckwash with outlets forward and aft  
Chain locker  
Curved direct glazed safety glass windscreen  
Pantograph windscreen wipers and washers  
Fuel fillers port and starboard  
Fresh water filler  
IMCO Navigation lights  
Remote controlled spotlight at bow  
Low-level courtesy lights on side decks 24v  
Ensign staff and socket  
Bow seat and sunbathing pad

### 3 Bathing platform

Teak-laid hydraulic lifting bathing platform  
Stairs to aft cockpit with teak treads  
Fold-out stainless steel swimming ladder  
Hot and cold hand-held swimming shower  
Fresh water marina connection  
Television and telephone marina connection  
Access to crew quarters  
Euro specification only: hydraulic telescopic gangway (option on US spec)  
Euro specification only: dockside AC connection sockets x 2 (2 x 63 amp)  
US specification only: dockside AC connection 1 x 100 amp Glendinning Cablemaster

### 4 Flybridge

Self draining cockpit  
Acrylic deflecting spray screen  
Seating areas  
Storage lockers under seating  
Teak dining table with GRP base  
Upholstered sunbathing area forward  
Stainless steel aft safety rails  
Glass holders  
Wetbar with sink, ice maker, cool chest and ceramic griddle  
Fire extinguisher in wetbar locker  
Deckwash outlet  
Low-level flybridge lighting 24v  
Radar arch structure with lighting on underside 24v  
Two pairs marine speakers

### 5 Flybridge helm position

Bench seat  
Hydraulic steering  
Duplicate engine controls and analogue instrumentation  
Autopilot repeater  
Radar/chartplotter with GPS repeater (1 x display)  
Depth and speed multi display  
VHF second station  
Remote spotlight control  
Manual compass  
Steering indicator  
Trim tab control  
Horn control  
Instrument cover  
Radio/CD remote keypad  
Waterproof plug and socket 12v

### 6 Aft cockpit

Teak laid cockpit floor  
Self draining  
Stairs to flybridge with teak treads  
Aft fixed bench seating  
Teak table with folding leaves on GRP base  
Stern safety gates  
Engine room access hatch  
2 x stern capstan winches 24v and fairleads  
Overhead cockpit lights 24v  
Low-level courtesy lights 24v  
Pair marine speakers connected to Saloon AV system  
Bar unit  
Fire extinguisher in wetbar locker

### 7 Covers

Windscreen sun screen  
Flybridge instrument cover  
Euro specification only: aft cockpit camper with windows (optional for US specification)  
US specification only: shipping cover (optional for European specification)

### 8 Saloon and dining

Stainless steel framed sliding patio door to aft cockpit with curtains and tie back  
Sofa seating  
Armchair  
Coffee table  
Scatter cushions  
LCD flatscreen television (42") on rise and fall  
DVD/CD/radio surround sound system with five speakers and sub woofer  
I-Pod docking station connected to surround sound system  
Control head for flybridge CD/radio system  
Air conditioning  
Side windows with blinds  
Drinks cabinet with glassware stowage for eight (8 x champagne, 8 x whisky, 1 x decanter)  
Halogen overhead lighting 24v  
Double AC sockets  
Sensor connected to fire detection system  
Telephone point (aft starboard side)  
2 x table lamps  
Dining table  
8 x free standing chairs  
Storage  
Access forward to main helm position  
Door leading to Galley  
Stairs leading to master stateroom and two guest cabins

### 9 Galley

American style fridge/freezer with ice maker  
4-ring ceramic hob AC  
Microwave/Oven AC  
Hob extractor AC  
Slimline dishwasher AC  
Stainless steel sink  
Hot and cold water  
Rubbish bin  
8 place crockery set  
8 place cutlery set  
Side window with blind  
Storage consisting of cupboards, drawers and top-box lockers  
Halogen overhead lighting 24v  
Spotlights under top box lockers 24v  
Double AC sockets  
Sensor connected to fire detection system  
Fire extinguisher  
Fire blanket  
First aid kit  
Door to saloon area  
Manual side opening door to port side deck  
US specification only: free standing coffee maker

### 10 Day head (optional)

Tecma toilet 24v  
Granite floor  
Washbasin  
Taps and accessories (toilet roll holder, soap dish, towel ring)  
Mirror  
Extractor fan  
Halogen overhead lighting  
Side window with blind

### 11 Main helm console and observation area

2 x upholstered helm seats with electric operation  
Console with walnut effect fascia  
Hydraulic power steering  
Wooden rimmed steering wheel  
Radar/Chart plotter with GPS (x 2 displays)  
Autopilot  
Depth and speed displays  
VHF radio dual station  
Manual compass  
Horn controls  
Switch panels  
Remote spotlight control  
Trim tab controls  
Rudder indicator  
Full analogue engine instrumentation  
Fresh water gauge  
Fuel gauge  
Cigar lighter  
Main control panel (AC/DC) with generators control  
Monitoring panel for fire detection system  
Windscreen wipers with washers  
Screen demister  
Glass holder  
Fire extinguisher  
Manual side opening door to starboard side deck  
Sofa seat on port side  
Double AC sockets (port side)  
2 x telephone point (port side)  
Staircase forward leading to VIP stateroom

### 12 Forward VIP stateroom

Stairs leading from main helm area  
Double berth  
Foam mattress for berth  
Storage beneath berth  
Drawers in berth-end  
Bedside lights 24v  
Dressing table  
Stool for dressing table  
Sofa  
Air conditioning  
LCD flatscreen television (42") on bulkhead  
DVD/CD player with two speakers  
Halogen overhead lighting 24v  
Two opening portholes on each side with mosquito screens and blind  
Double AC socket  
Fitted carpet  
Sensor connected to fire detection system  
2 x telephone points (port bedside and dressing table)  
Door to en suite toilet/shower and walk-in wardrobe

### 13 Forward VIP walk-in wardrobe

Hanging rails  
Drawers  
Shelves  
Full-length mirror  
Halogen overhead lighting 24v  
Fitted carpet  
Door to stateroom

### 14 Forward VIP en suite

Vanity top and flooring  
Tecma toilet 24v  
Large ceramic washbasin  
Taps and accessories (toothbrush and glass holder, soap dish, towel rails and towels)  
Separate shower compartment  
Acrylic folding shower door  
Air conditioning outlet  
Extractor fan  
Mirrored vanity unit  
Shelved cupboard  
Halogen overhead lighting 24v  
Opening porthole with mosquito screen and venetian blind  
Shaver socket 240/110v  
Door to stateroom

### 15 Lower deck lobby

Stairs leading down from main deck saloon area  
Halogen overhead lighting  
AC socket  
Fitted carpet  
Large bilge access hatch  
Sensor connected to fire detection system  
Doors leading to master stateroom and two guest cabins

### **16 Midships master stateroom**

Double berth  
Foam mattress for berth  
Storage beneath berth  
Drawers in base-end and sides  
Bedside units with storage  
Bedside lights 24v  
Dressing table with mirror  
Low-back chair for dressing table  
Sofa  
Air conditioning  
Halogen overhead lighting 24v  
2 x table lamps  
Four vertical portholes with blinds on each side (centre two portholes openable with mosquito screens)  
Double AC sockets  
2 x telephone points (dressing table and starboard bedside table)  
LCD flatscreen television (42") on bulkhead  
DVD/CD/Radio surround system with two speakers and sub woofer  
Door to en suite and walk-in wardrobe  
Fitted carpet

### **17 Midships master en suite**

Vanity top and flooring  
Tecma toilet 24v  
Bidet  
Large ceramic washbasin  
Taps and accessories (toothbrush and glass holder, soap dish, towel rails and towels)  
Separate shower compartment  
Acrylic folding shower door  
Extractor fan  
Air conditioning outlet  
Mirrors  
Halogen overhead lighting 24v  
Opening porthole with mosquito screen and venetian blind  
Shaver socket 240/110v  
Door to stateroom

### **18 Midships master walk-in wardrobe**

Hanging rails  
Drawers  
Shelves  
Full-length mirror  
Halogen overhead lighting 24v  
Fitted carpet  
Door to master stateroom

### **19 Aft port guest cabin**

Two single berths  
Foam mattresses for berths  
Under berth stowage  
2 x reading lights 24v  
Wardrobe  
Air conditioning  
Halogen overhead lighting 24v  
Three vertical portholes with blind (centre portholes openable with mosquito screen)  
Double AC socket  
Sensor connected to fire detection system  
Storage lockers  
LCD flatscreen television (20")  
DVD/CD player with two speakers  
Telephone point  
Fitted carpet

### **20 Aft port guest en suite**

Vanity top and flooring  
Tecma toilet 24v  
Washbasin  
Taps and accessories (toothbrush and glassholder, soap dish, towel rails and towels)  
Separate shower compartment  
Acrylic folding shower door  
Extractor fan  
Air conditioning outlet  
Mirrored vanity unit  
Shelved cupboard  
Halogen overhead lighting 24v  
Opening porthole with mosquito screen and venetian blind  
Shaver socket 240/110v  
Door to guest cabin

### **21 Aft starboard guest cabin**

Two single berths  
Foam mattresses for berths  
Under berth stowage  
2 x reading lights 24v  
Wardrobe  
Air conditioning  
Halogen overhead lighting 24v  
Three vertical portholes with blind (centre porthole openable with mosquito screen)  
Double AC socket  
Sensor connected to fire detection system  
Storage lockers  
CD/radio player with two speakers  
Telephone point  
Fitted carpet

### **22 Aft starboard guest en suite**

Vanity top and flooring  
Tecma toilet 24v  
Washbasin  
Taps and accessories (toothbrush and glassholder, soap dish, towel rails and towels)  
Separate shower compartment  
Acrylic folding shower door  
Extractor fan  
Air conditioning outlet  
Mirrored vanity unit  
Shelved cupboard  
Halogen overhead lighting 24v  
Opening porthole with mosquito screen and venetian blind  
Shaver socket 240/110v  
Door to guest cabin

### **23 Stern crew mess**

Access door from stern  
Storage  
Sink  
Air conditioning  
AC sockets  
Telephone point  
Sensor connected to fire detection system  
Halogen overhead lighting 24v  
Non-slip flooring  
Small fridge  
Sofa  
Table  
LCD Television  
CD/DVD with two speakers  
Washer/dryer  
Doors to crew cabins and toilet/shower

### **24 Starboard crew cabin**

Double berth  
Foam mattress for berth  
Air conditioning  
Halogen overhead lighting 24v  
Double AC socket  
Telephone point  
Sensor connected to fire detection system  
CD/Radio with two speakers  
2 x reading lights 24v  
Fitted carpet  
Opening porthole with mosquito screen and curtains  
Door to crew mess

### **25 Port crew cabin**

Twin bunk berths  
Foam mattresses for berths  
Air conditioning  
Halogen overhead lighting 24v  
Double AC socket  
Telephone point  
Sensor connected to fire detection system  
2 x reading lights 24v  
Fitted carpet  
Opening porthole with mosquito screen and curtains  
Door to crew mess

### **26 Crew toilet/shower**

Tecma toilet 24v  
Washbasin  
Shower cubicle with curtain  
Mirrored vanity unit  
Halogen overhead lighting 24v  
Shaver socket 240/110v  
Door to crew mess  
Engine room access door

### **27 Engine compartment and ancillaries**

Soundproofing throughout  
Fuel filters/water separators to engines  
Fuel filters/water separators to generators  
FM200 manual/automatic fire extinguishing system combined with engines, generators and fans shutdown  
Automatic bilge and flood pumps with high level alarms  
Air extraction fans, AC  
Generator exhaust silencers and water separators  
Engine exhaust dry risers and water injection  
Strainers to all raw water inlets  
Sensor connected to fire detection system

### **28 Electrical system**

Euro specification only: Slow speed Kohler generators  
2 x 23kW @ 50Hz with underwater silent exhaust and sound box  
US specification only: Slow speed Kohler generators 2 x 28kW @ 60Hz with underwater silent exhaust and sound box  
Euro specification only: Dockside AC connection sockets x 2 (2 x 63 amp)  
US specification only: dockside AC connection 1 x 100 amp Glendinning Cablemaster  
Galvanic Isolator  
Semi-Automatic AC Power Management System  
24v and 12v DC electrical system with full circuit breaker protection  
8 x engine batteries 24v circuit  
8 x domestic batteries 24v circuit  
4 x generator batteries 12v circuit  
Alternator split charging system  
Remote battery switches controlled from locker in cockpit  
2 x 95 amp battery charger for 24v circuits  
40 amp battery charger for 12v circuits  
2 x 2kW immersion heaters for calorifier  
AC sockets throughout the boat  
24v hand light and cable  
Fire detection system with sensors in all cabins

and monitoring beside main helm position

### **29 Underwater gear**

NAB 5 blade propellers  
Bronze (MB2) P-brackets  
90mm Temet 25 propeller shafts  
Self aligning shaft seal with spare seal  
High-performance bronze rudders  
Valves to all underwater skin fittings  
Full cathodic bonding system to zinc anodes  
Stainless steel trim tabs  
Hydraulic bow thruster (30hp, sequential operation)  
Hydraulic stern thruster (30hp, sequential operation)  
Antifouling (white)

### **30 Systems**

Hydraulic power steering (24v)  
Electric toilet system (Tecma, 24v) with two switch control  
Toilets discharging overboard or to black water tank  
Black water tank discharging to dockside or overboard through discharge/macerator pump (24v)  
Aluminium fresh water tank with electric sending unit  
Integral GRP fuel tank with electric sending unit  
Water pressure system (24v)  
Hot water tank, 200 litre (calorifier with 2 x 2kW immersion heaters)  
Hot water circulating pump, AC  
Washbasins, showers and air conditioning fan coils to drain to grey water tank  
Grey water tank discharging overboard through discharge/macerator pump (24v)  
Hot water circulating pump  
Chilled water air conditioning system (reverse cycle), AC  
Bilge pumping system (24v)  
FM200 manual/automatic fire extinguishing system combined with engines, generators and fans shutdown  
Auxiliary hydraulics for trim tabs and platform (24v)

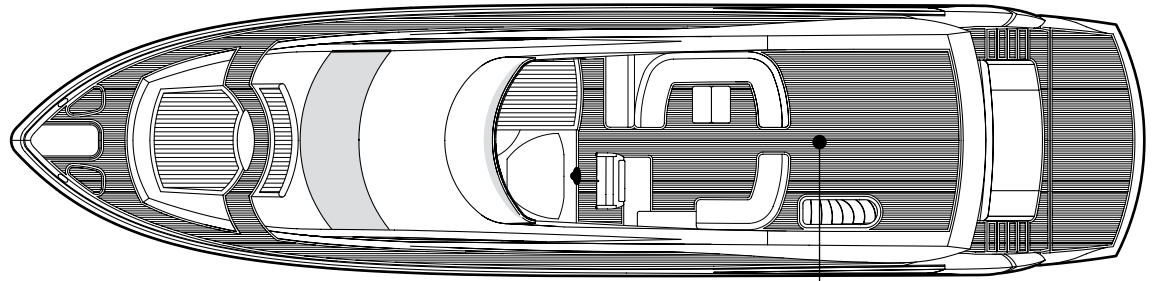
### **31 Miscellaneous**

Boat hook  
6 x docking lines (6 x 15 metre, 20mm diam, black)  
1 x tender line (1 x 10 metre, 10mm diam, black)  
8 x fenders (F7, 15" x 41", white)  
8 x fender ties (8 x 3.5 metre, 10mm diam, black)  
Flagstaff with line  
Pennant mast with pennant flag  
Mosquito screens for openable portlights  
Vacuum cleaner  
Spare bulbs  
Small toolkit  
12 x towel sets  
First aid kit  
Fire blanket  
Leather cleaning kit  
Lead lamp  
Deckwash fitting and hose reel  
Euro specification only: Shorepower cable  
(1 x 20m length, 63 amp cable with one socket)

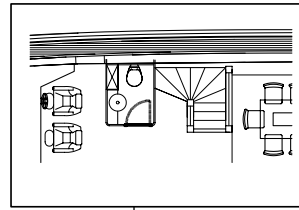
### **US specification includes**

Upgraded generators  
US Coast Guard build regulations  
US specification appliances

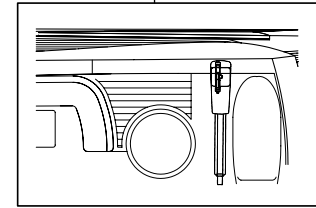
FLYBRIDGE



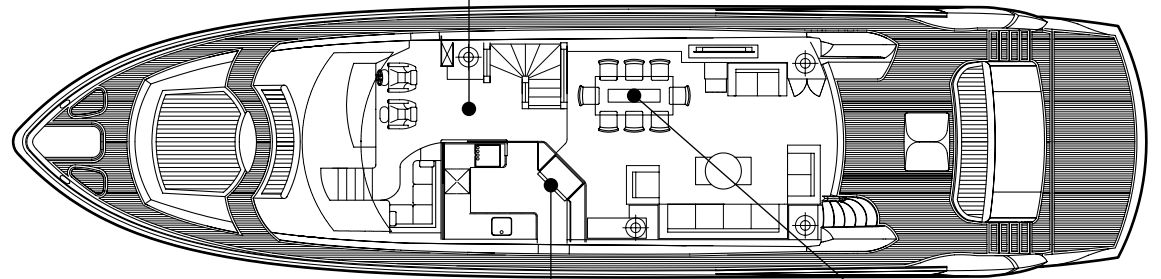
Optional hot tub/  
crane & jet ski



Optional day head

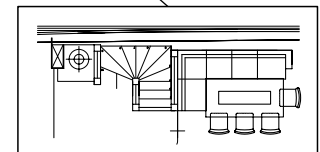
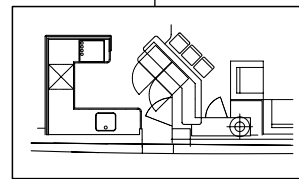


MAIN DECK

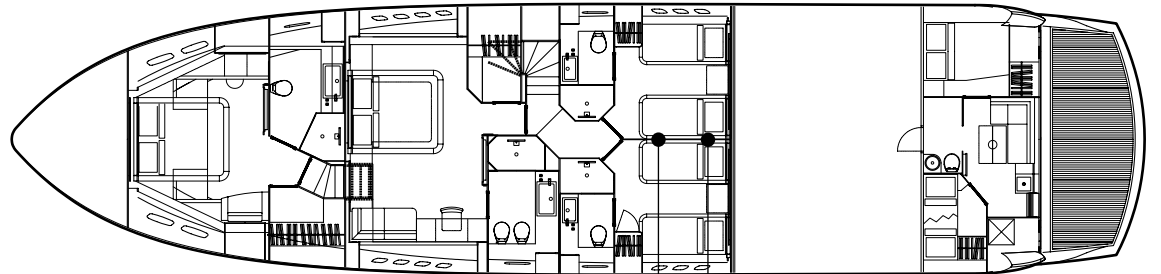


Optional fixed  
dinette seating

Optional open galley

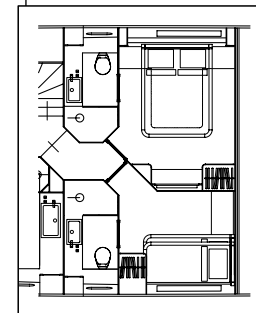
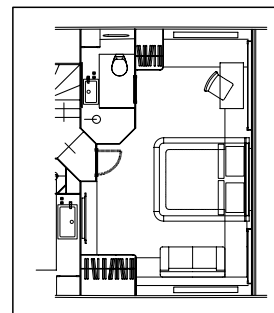


LOWER DECK



Optional VIP suite

Optional double guest  
starboard  
pullman guest port







THE WORLD'S FINEST LUXURY MOTORYACHTS

\*Every attempt has been made to give accurate information, but performance and range figures are estimates given as a guide only. Dirt or growth on the hull, tuning of the engines, size, make of engines fitted, damage to propellers, the temperature of the air and water, the weight of fuel, water, stores, number of people, propeller pitch, quality of fuel and other matters, can all affect a boat's performance and range. For these and other reasons we can give no performance, range or other guarantees, and neither such guarantees nor anything contained herein constitutes an offer of contract or any representation or agreement, or may otherwise be relied upon. The photographs and artist's impressions in this brochure are of existing models in the Sunseeker range. There may be items shown in these photographs and artist's impressions that are not included in the standard inventory of the models shown. Specifications contained on the web site are samples only and should not be relied upon and may refer to models only intended for sale in a particular territory and not generally. No guarantee is given that any model will be available in any territory; however by contacting us we can advise you of models that are likely to be available in each territory. Actual specifications will be provided when a sales order or enquiry is placed with us or our approved Sunseeker dealer. Specifications for models sold in different markets may vary and specifications and models may be changed or withdrawn at any time without prior notice. The individual specification for each vessel will be agreed as part of the sale contract between the purchaser and the Sunseeker dealer. Dealers and distributors are independently owned and operated entities, and therefore Sunseeker dealers and distributors are not owned by Sunseeker International Limited or any subsidiaries or other related entity of this company nor are they their agents. Therefore they have absolutely no authority to commit Sunseeker International Limited, or any subsidiary or other related entities of Sunseeker International Limited to any pledge, contract or agreement in any form or by any means unless first accepted in writing by Sunseeker International Limited. In some examples herein Sunseeker have referred to measurements, specifications or other details applicable to a particular territory and no guarantee is given that these are applicable to your territory. For ease of reference we have, in some cases, referred to "we" or "Sunseeker" and these terms should be taken to mean Sunseeker International Limited.

Designed, written and produced by Marketing Matters Limited. Printed in England. August 2007. ©Sunseeker International.

**Naval architects**  
Don Shead/Sunseeker Design  
**Exterior styling**  
Sunseeker Design  
**Interior design**  
Sunseeker Design  
**Builder**  
Sunseeker International

**[www.sunseeker.com](http://www.sunseeker.com)**