

82



SUNSEEKER 82 YACHT

SPECIFICATION



Ergonomic skills and exceptional imagination are behind the Sunseeker 82 Yacht – a boat with outstanding interior space, several layout options and all the luxurious hallmarks you would expect from Sunseeker. Interiors are exceptional, with the feeling of light and space on the main deck accentuated by open sight lines from the rear sun deck right through to the raised helm station.

- A:** Twin guest cabin
- B:** Owner's stateroom
- C:** Guest cabin
- D:** Forward VIP stateroom
- E:** Main saloon
- F:** Galley
- G:** Dining area



PRINCIPAL CHARACTERISTICS

Length overall – (incl. pulpit and platform)	25.15m	82'6"	
Length waterline – (@ half load)	19.70m	64'8"	
Beam – (maximum)	6.17m	20'3"	
Height above waterline – (incl. mast)	7.20m	23'8"	
Draft – (incl. props)	1.70m	5'7"	
Displacement – (@ half load)	55000kg	121254 lb	
Fuel capacity	6500 litres	1430 GB gal.	1717 US gal.
Fresh water capacity	1500 litres	330 GB gal.	396 US gal.
Propulsion	2 x submerged props in semi-tunnels		
Engine options	up to 3350 PS (total)		
Fuel options	Diesel		
Generators	Standard		
	2 x 20kW (Euro)		
	2 x 23kW (US)		
Maximum speed	up to 32 knots*		
Cruising speed	up to 22 knots*		
Range	up to 320 nautical miles*		

PRINCIPAL FEATURES

Air conditioning	Slow speed generators with silent exhausts
Hydraulic lifting platform	AC shorepower/battery charger
Electric winch with foredeck and flybridge controls	Bow thruster
Side opening helm access door	Stern thruster
Hot and cold swimming shower at stern	Trim tabs
Power-assisted steering	Remote controlled spotlight at bow
Flybridge wetbar with sink, ice maker, cool chest and griddle	Deckwash with outlets forward, aft and flybridge
Flatscreen televisions in all guest cabins (except crew)	Fresh water marina connection
Surround-sound system DVD/CD/radio in saloon and master stateroom	Teak bathing platform and steps
DVD/CD player with two speakers in guest cabins	Teak side decks
Aft cockpit wetbar with rubbish bin and cool chest	Teak cockpit floor
Electric refrigerator, freezer and ice maker	Screen demisters
Ceramic hob, microwave/oven and dishwasher	Stern winches
Electronic depth and speed displays	Antifouling
Radar/Chart plotter with GPS	
Autopilot	All items included in standard specification.
VHF dual station	US specification includes:
Hot and cold water system	Upgraded generators
Fresh water pump	US Coast Guard build regulations
Toilet system with holding tank	US specification appliances
Automatic fire extinguishing system for engine room	
Automatic bilge pumps	



STANDARD SPECIFICATIONS

1 Construction

Hand-laid GRP
Gel coat including stripes
Vinylester skin coat with powderbound mat
Stitched multi-axial reinforced single skin bottom
Balsa cored hull topsides
PVC foam cored deck and superstructure
Hull stiffened with longitudinal stringers supported by transverse bulkheads and floors

2 Deck

Fittings all in stainless steel
Pair bow cleats and fairleads
Three pairs spring cleats with chafing bars
Pair stern cleats and fairleads
Pulpit and cockpit rails
Stainless steel fendering with rubber insert
Stainless steel bow roller with anchor stop
Stainless steel bow plate
Anchor 50kg and 100m chain (galvanised)
Electric winch and capstan with foredeck and flybridge controls
Deckwash with outlets forward and aft
Chain locker and fender stowage
Fender tie bar under anchor locker lid
Curved direct glazed safety glass windscreen
Pantograph windscreen wipers and washers
Fuel fillers port and starboard
Fresh water filler
IMCO Navigation lights
Remote controlled spotlight at bow
Low-level courtesy lights on side decks 24v
Ensign staff and socket
Bow seat and sunbathing pad

3 Bathing platform

Teak-laid hydraulic lifting bathing platform (450kgs/992 lb maximum lifting capacity)
Stairs to aft cockpit with teak treads
Fold-out stainless steel swimming ladder
Euro specification only: hydraulic telescopic gangway (option on US spec)
Hot and cold hand-held swimming shower
Fresh water marina connection
Television and telephone marina connection
Lazarette stowage
Euro specification only: dockside AC connection sockets x 2 (2 x 63 amp)
US specification only: dockside AC connection 1 x 100 amp Glendinning Cablemaster

4 Flybridge

Self draining cockpit
Acrylic deflecting spray screen
Seating areas
Storage lockers under seating
Teak dining table on GRP base
Upholstered sunbathing area forward
Stainless steel aft safety rails
Glass holders
Wetbar with sink, ice maker, cool chest and ceramic griddle
Fire extinguisher in wetbar locker
Deckwash outlet
Low-level flybridge lighting 24v
Radar arch structure
Two pairs marine speakers
Companionway hatch to aft cockpit

5 Flybridge helm position

Hydraulic steering
Duplicate engine controls and analogue instrumentation
Autopilot repeater
Radar/chartplotter with GPS repeater (1 x display)
Depth and speed multi display
VHF dual station
Remote spotlight control
Manual compass
Steering indicator
Trim tab control
Horn control
Instrument cover
Radio/CD remote keypad
Waterproof plug and socket 12v

6 Aft cockpit

Teak laid cockpit floor
Self draining
Stairs to flybridge with teak treads
Aft fixed bench seating
Teak table with folding leaves on GRP base
Aft rope lockers
Stern safety gates
Engine room access hatch
2 x stern capstan winches 24v and fairleads
Overhead cockpit lights 24v
Pair marine speakers connected to flybridge CD/radio system
Locker with rubbish bin, cool chest and storage
Fire extinguisher in wetbar locker

7 Covers

Windscreen sun screen
Flybridge instrument cover
Euro specification only: aft cockpit camper with windows (optional for US specification)
US specification only: shipping cover (optional for European specification)

8 Saloon and dining

Sofa seating in aft saloon with coffee table and scatter cushions
Flatscreen television (42")
DVD/CD/radio surround system
I-Pod docking station connected to surround sound system
Control head for flybridge CD/radio system
Air conditioning
Side windows with blinds
Drinks cabinet with glassware stowage for eight (8 x Champagne, 8 x whisky, 1 x decanter)
Stainless steel framed sliding patio door to aft cockpit with curtains and tie back
Halogen overhead lighting 24v
Double AC sockets
Telephone point (aft starboard side)
2 x table lamps
Dining table with 8 free standing chairs

9 Galley with open plan bar

Refrigerator AC (open plan version only)
Freezer AC (open plan version only)
Ice maker AC (open plan version only)
Optional American style fridge/freezer/ice maker
4-ring ceramic hob AC
Microwave/Oven AC
Hob extractor AC
Slimline dishwasher AC
Stainless steel sink
Hot and cold water
Rubbish bin
8 place crockery set
8 place cutlery set
Storage consisting of cupboards, drawers, top-box lockers and larder unit
Halogen overhead lighting 24v
Spotlights under top box lockers
Double AC sockets
Fire extinguisher
Fire blanket
First aid kit
US specification only: free standing coffee maker

10 Lower helm console and observation area

Sofa seat and chart box storage
Double AC sockets (low-level and beside chart table)
2 x telephone point (beside chart table)
2 x upholstered helm seats with electric control
Console with walnut effect fascia
Hydraulic power steering
Wooden rimmed steering wheel
Radar/Chart plotter with GPS (x 2 displays)
Autopilot
Depth and speed displays
VHF dual station
Manual compass
Horn controls
Switch panels
Remote spotlight control
Trim tab controls
Rudder indicator
Full analogue engine instrumentation
Fresh water gauge
Fuel gauge
Cigar lighter
Main control panel (AC/DC) with generators control
Windscreen wipers with washers
Screen demister
Glass holder
Fire extinguisher
Side opening door to starboard side deck

The lower deck accommodation layout is available in three arrangements:

Master grand suite (standard):
Large master suite with en suite. Large VIP stateroom forward with en suite and walk-in wardrobe, one twin guest cabin with en suite/day head plus a twin Pullman guest cabin.

Master junior suite (optional):

Master stateroom with en suite and walk-in wardrobe. Large VIP stateroom forward with en suite and walk-in wardrobe, two twin guest cabins each with its own en suite

Master grand suite with owner's private stairwell (optional):

Large master suite with private staircase access from the saloon, plus en suite and walk-in wardrobe. Large VIP stateroom forward with en suite and walk-in wardrobe, one twin guest cabin with en suite/day head plus a twin Pullman guest cabin.

11 Master aft stateroom (master grand suite layout)

Double berth with foam mattress
Storage beneath berth
Drawers in base-end and sides
Bedside units with storage
Bedside lights 24v
Wardrobes
Dressing table with mirror and low-back chair
Two seater settee
Air conditioning
Halogen overhead lighting 24v
2 x table lamps x 2
3 x large portholes with blinds each side (centre portlight only opening each side with mosquito screen, others fixed)
Double AC sockets
2 x telephone points (dressing table and starboard bedside table)
Flatscreen television (42")
DVD/CD/Radio surround system
Door to en suite
Fitted carpet
Separate walk-in wardrobe with master junior suite and master grand suite with owner's private stairwell options.

12 Master en suite

Granite vanity top and flooring
Tecma toilet 24v
Twin washbasins
Taps and accessories (toothbrush and glass holder, soap dish, towel rails and towels)
Shower cubicle (optional spa bath with shower (grand suite version only))
Extractor fan
Air conditioning outlet
Mirrors
Halogen overhead lighting 24v
Opening porthole with mosquito screen and venetian blind
Shaver socket 240/110v
Door to stateroom

13 Port guest cabin

Twin Pullman berths with foam mattresses
Under berth stowage (lower berth)
2 x reading lights 24v
Wardrobe
Air conditioning
Halogen overhead lighting 24v
Opening porthole with mosquito screen and blind
Double AC socket
Storage lockers
LCD flatscreen television (20")
DVD/CD player with two speakers
Telephone point (between berths)
Fitted carpet

Optional port twin guest cabin (only available with master junior suite layout):

Two single berths with foam mattresses
Under berth stowage
2 x reading lights 24v
Bedside unit with stowage
Wardrobe
Air conditioning
Halogen overhead lighting 24v
Opening porthole with mosquito screen and blind
Double AC socket
Storage lockers
LCD flatscreen television (20")
DVD/CD player with two speakers
Telephone point (beside bedside table)
Door to en suite
Fitted carpet

14 Optional port cabin en suite (only available with master junior suite layout):

Granite vanity top and flooring
Tecma toilet 24v
Washbasin
Taps and accessories (toothbrush and glassholder, soap dish, towel rails and towels)
Shower cubicle
Acrylic shower door
Extractor fan
Air conditioning outlet
Mirrored vanity unit
Shelved cupboard
Halogen overhead lighting 24v
Opening porthole with mosquito screen and venetian blind
Shaver socket 240/110v
Door to guest cabin

15 Starboard guest cabin

Two single berths with foam mattresses
Under berth stowage
2 x reading lights 24v
Bedside unit with storage
Wardrobe
Air conditioning
Halogen overhead lighting 24v
Opening porthole with mosquito screen and blind
Double AC socket
Door to en suite toilet/shower room
Overhead lockers
LCD flatscreen television (20")
DVD/CD player with two speakers
Telephone point (beside bedside table)
Fitted carpet
Doors to guest cabin and lobby

16 Starboard cabin en suite/day head

Granite vanity top and flooring
Tecma toilet 24v
Washbasin
Taps and accessories (toothbrush and glassholder, soap dish, towel rails and towels)
Shower cubicle
Acrylic shower door
Extractor fan
Air conditioning outlet
Mirrored vanity unit
Shelved cupboard
Halogen overhead lighting 24v
Opening porthole with mosquito screen and venetian blind
Shaver socket 240/110v
Doors to guest cabin and lobby

17 Forward VIP stateroom

Double berth with foam mattress
Storage beneath berth
Drawers in berth-end
Bedside lights 24v
Dressing table with stool
Air conditioning
LCD flatscreen television (42")
DVD/CD player with two speakers
Halogen overhead lights 24v
Opening portholes with mosquito screens and curtains
Opening skylight
Double AC socket
2 x telephone points (port bedside and dressing table)
Door to en suite toilet/shower and walk-in wardrobe
Fitted carpet

18 Forward VIP walk-in wardrobe

Hanging rails
Drawers
Shelves
Full-length mirror
Halogen overhead lighting 24v
Fitted carpet
Door to stateroom

19 Forward VIP en suite

Granite vanity top and flooring
Tecma toilet 24v
Washbasin
Taps and accessories (toothbrush and glass holder, soap dish, towel rails and towels)
Shower cubicle
Acrylic shower door
Air conditioning outlet
Extractor fan
Mirrored vanity unit
Shelved cupboard
Halogen overhead lighting 24v
Opening porthole with mosquito screen and venetian blind
Shaver socket 240/110v
Door to stateroom

20 Starboard crew cabin

Entrance door from transom
Teak stair treads
Air conditioning
Engine room access door
Washer/Dryer AC
Halogen overhead lighting 24v
Double AC socket
Opening porthole with mosquito screen and curtains
Single berth with foam mattress
Radio/CD player with two speakers
Reading light 24v
Telephone point (outboard shelf)
Safety flooring
Door to port crew cabin

21 Port crew cabin

Single berth with foam mattress
Reading light 24v
Halogen overhead lighting 24V
Single AC socket
Wardrobe
Door to crew port toilet/shower room
Fitted carpet

22 Crew port en suite

Tecma toilet 24v
Washbasin
Shower with curtain
Mirrored vanity unit
Halogen overhead lighting 24v
Shaver socket 240/110v
Opening porthole with mosquito screen and venetian blind
Door to port crew cabin

23 Engine compartment and ancillaries

Separate fuel filters with water alarms
Automatic fire extinguisher with engine/generator and fan shutdown
1 x automatic bilge pump (in each watertight compartment)
1 x automatic flood pump (forward and engine room)
2 x extractor fans AC
Manual bilge pump

24 Electrical system

Euro specification only:
Slow speed Kohler generators 2 x 20kW @ 50Hz with underwater silent exhaust and sound box
US specification only:
Slow speed Kohler generators 2 x 23kW @ 60Hz with underwater silent exhaust and sound box
Euro specification only:
dockside AC connection sockets x 2 (2 x 63 amp)
US specification only: dockside AC connection 1 x 100 amp Glendinning CABLEMASTER
Galvanic isolator
24v and 12v DC electrical system with full circuit breaker protection
6 x engine batteries 24v circuit
8 x domestic batteries 24v circuit
4 x generator batteries 12v circuit
Alternator split charging system
Remote battery switches controlled from locker in cockpit
95 amp battery charger for 24v circuits
70 amp combi/charger
20 amp battery charger for 12v circuits
2 x 2kW immersion heaters for calorifier
AC sockets throughout the boat
24v hand light and cable

25 Underwater gear

5-blade NAB bronze propellers
Bronze P-brackets
Stainless steel Temet 25 shafts
Dripless shaft logs with spare seals
High-performance bronze rudders and struts
Seawater strainers – 2 x main engines and generators
Seacocks on all underwater fittings
Full cathodic bonding system to zinc anodes
Hydraulic bow thruster (30hp), sequential operation
Hydraulic stern thruster (30hp), sequential operation
Hydraulic trim tabs
Antifouling (white)

26 Systems

Hydraulic power steering engine driven pump
Tecma toilets (24v) with one switch control (incorporating tank level indication)
Toilets discharging overboard or to black water tank
Black waste water tank discharging to dockside or overboard through (24v) macerator pump
Washbasins, showers, air conditioning fan units discharging to grey waste sump
Grey waste water sump with overboard discharge (24v)
Fresh water tank with electric sending unit
24v DC fresh water pressure system
Hot water circulating pump
200 litre calorifier with 2 x 2kW immersion heaters
Chilled water air conditioning system (reverse cycle)

27 Miscellaneous

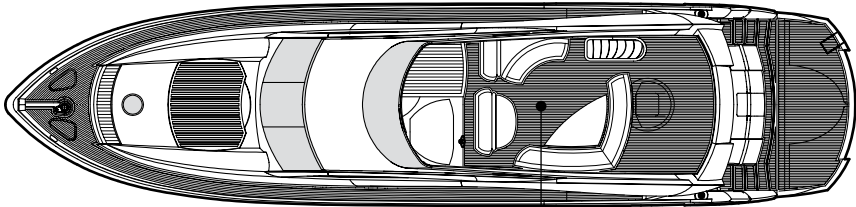
Toolkit
Boat hook
6 x mooring ropes
8 x fenders
Vacuum cleaner
Spare bulbs and fuses
6 sets towels

US specification includes

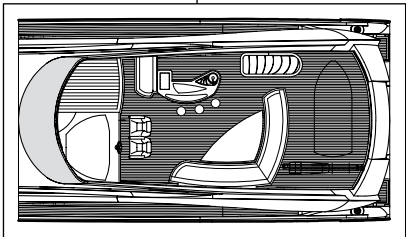
Upgraded generators
US Coast Guard build regulations
US specification appliances

FLYBRIDGE

Optional teak deck and spa tub shown

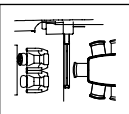


Optional Bar/helm seating,
teak and crane

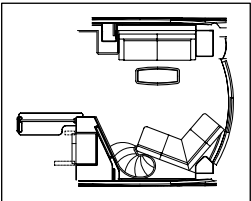
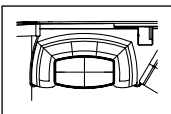


MAIN DECK

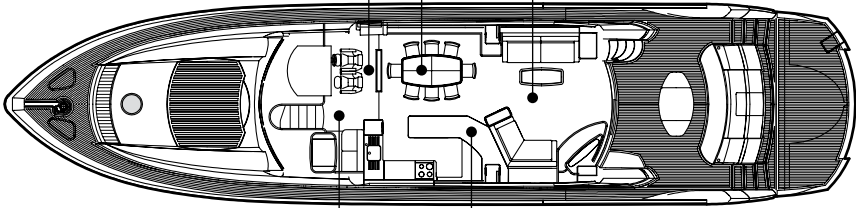
Optional full height
partitioning



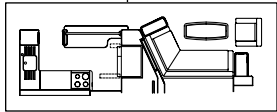
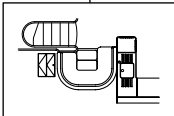
Optional U-shaped dining
seating with fixed table



Optional private
stairwell to owner's
master suite



Optional U-shaped
seating and fixed table

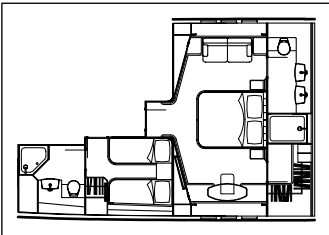


Optional half enclosed galley (saloon
seating to accommodation)

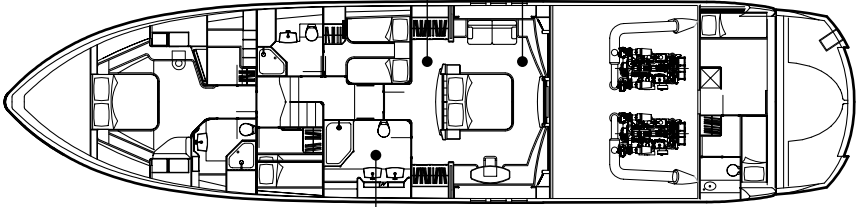
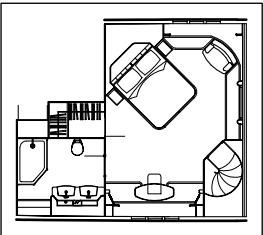
LOWER DECK

Optional teak deck and spa tub shown

Optional master
junior suite and port
twin guest cabin



Optional master
grand suite with
private stairwell



Optional spa bath and bidet







THE WORLD'S FINEST LUXURY MOTORYACHTS

*Every attempt has been made to give accurate information, but performance and range figures are estimates given as a guide only. Dirt or growth on the hull, tuning of the engines, size, make of engines fitted, damage to propellers, the temperature of the air and water, the weight of fuel, water, stores, number of people, propeller pitch, quality of fuel and other matters, can all affect a boat's performance and range. For these and other reasons we can give no performance, range or other guarantees, and neither such guarantees nor anything contained herein constitutes an offer of contract or any representation or agreement, or may otherwise be relied upon. The photographs and artist's impressions in this brochure are of existing models in the Sunseeker range. There may be items shown in these photographs and artist's impressions that are not included in the standard inventory of the models shown. Specifications contained on the web site are samples only and should not be relied upon and may refer to models only intended for sale in a particular territory and not generally. No guarantee is given that any model will be available in any territory; however by contacting us we can advise you of models that are likely to be available in each territory. Actual specifications will be provided when a sales order or enquiry is placed with us or our approved Sunseeker dealer. Specifications for models sold in different markets may vary and specifications and models may be changed or withdrawn at any time without prior notice. The individual specification for each vessel will be agreed as part of the sale contract between the purchaser and the Sunseeker dealer. Dealers and distributors are independently owned and operated entities, and therefore Sunseeker dealers and distributors are not owned by Sunseeker International Limited or any subsidiaries or other related entity of this company nor are they their agents. Therefore they have absolutely no authority to commit Sunseeker International Limited, or any subsidiary or other related entities of Sunseeker International Limited to any pledge, contract or agreement in any form or by any means unless first accepted in writing by Sunseeker International Limited. In some examples herein Sunseeker have referred to measurements, specifications or other details applicable to a particular territory and no guarantee is given that these are applicable to your territory. For ease of reference we have, in some cases, referred to "we" or "Sunseeker" and these terms should be taken to mean Sunseeker International Limited.

Designed, written and produced by Marketing Matters Limited. Printed in England. August 2007. ©Sunseeker International.

Naval architects
Don Shead/Sunseeker Design
Exterior styling
Sunseeker Design
Interior design
Sunseeker Design
Builder
Sunseeker International

www.sunseeker.com